

SC018N120YM-R

Silicon Carbide MOSFET 1200V, 18mΩ, 106A



重庆平伟半导体股份有限公司

Features

- Low switching losses
- Extremely low on-resistance $R_{DS(on)}$
- Robust body diode operation under hard commutation events
- Easy to Parallel and Simple to Drive
- Qualified according to JEDEC criteria

Applications

- On-board charger
- DC/DC converter
- Auxiliary inverters

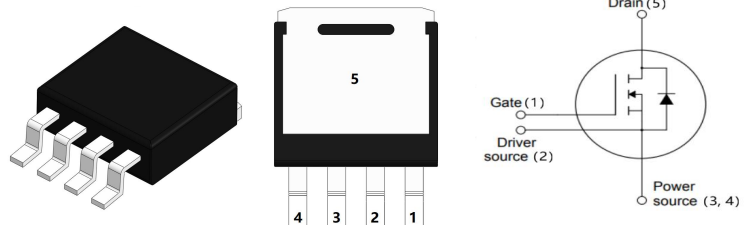


100% DVDS Tested
100% Avalanche Tested

Product Summary

V_{DS}	1200V
$R_{DS(on)}$ typ.	18mΩ
I_D	106A

TO-247SM



Package Marking and Ordering Information

Part #	Marking	Package	Packing	Reel Size	Tape Width	Qty
SC018N120YM-R	SC018N120YM	TO-247SM	Tape&Reel	13inches	32mm	600pcs

Absolute Maximum Ratings

Parameter	Symbol	Value	Unit
Drain-source voltage	V_{DS}	1200	V
Continuous drain current $T_C = 25^\circ\text{C}$	I_D	106	A
Pulsed drain current ($T_C = 25^\circ\text{C}$)	$I_{D \text{ pulse}}$	285	A
Avalanche energy, single pulse ($L=5\text{mH}$)	E_{AS}	640	mJ
Gate-Source voltage,max.transient voltage	V_{GSmax}	-8/+22	V
Gate-Source voltage,Recommended operating values	V_{GSsop}	-5/+18	V
Power dissipation $T_C = 25^\circ\text{C}$	P_{tot}	333	W
Operating junction and storage temperature	T_j, T_{stg}	-55...+175	$^\circ\text{C}$

Thermal Resistance

Parameter	Symbol	Value			Unit	Test Condition
		min.	typ.	max.		
Thermal resistance, junction - case.	R_{thJC}	-	0.3	0.45	°C/W	-
Thermal resistance, junction - ambient(min. footprint)	R_{thJA}	-	-	66	°C/W	-

Electrical Characteristic (at $T_j = 25\text{ }^\circ\text{C}$, unless otherwise specified)

Parameter	Symbol	Value			Unit	Test Condition
		min.	typ.	max.		

Static Characteristic

Drain-source breakdown voltage	BV_{DSS}	1200	-	-	V	$V_{GS}=0V, I_D=100\mu A$
Gate threshold voltage	$V_{GS(th)}$	2.0	2.8	4.0	V	$V_{DS}=V_{GS}, I_D=20mA$
Zero gate voltage drain current	I_{DSS}	-	1	10	μA	$V_{DS}=1200V, V_{GS}=0V$ $T_j=25^\circ C$ $T_j=175^\circ C$
Gate-source leakage current	I_{GSS}	-	-	100	nA	$V_{GS}=22V, V_{DS}=0V$
		-	-	-100	nA	$V_{GS}=-8V, V_{DS}=0V$
Drain-source on-state resistance	$R_{DS(on)}$	-	18	23	mΩ	$V_{GS}=18V, I_D=60A$
Transconductance	g_{fs}	-	41	-	S	$V_{DS}=20V, I_D=50A$

Dynamic Characteristic

Input Capacitance	C_{iss}	-	4817	-	pF	$V_{GS}=0V, V_{DS}=1000V,$ $f=300kHz$
Output Capacitance	C_{oss}	-	208	-		
Reverse Transfer Capacitance	C_{rss}	-	11	-		
Gate Total Charge	Q_G	-	203	-	nC	$V_{DS}=800V, I_D=40A$ $, V_{GS}=-5V/18V$
Gate-Source charge	Q_{gs}	-	77	-		
Gate-Drain charge	Q_{gd}	-	46	-		
Turn-on delay time	$t_{d(on)}$	-	22	-	ns	$V_{GS}=-5/18V,$ $V_{DD}=800V,$ $R_G=5\Omega, I_D=60A$
Rise time	t_r	-	25	-		
Turn-off delay time	$t_{d(off)}$	-	43	-		
Fall time	t_f	-	14	-		
Gate resistance	R_G	-	1.3	-	Ω	$V_{GS}=0V, f=1MHz$

SC018N120YM-R

Silicon Carbide MOSFET 1200V, 18mΩ, 106A



重庆平伟半导体股份有限公司

Body Diode Characteristic

Parameter	Symbol	Value			Unit	Test Condition
		min.	typ.	max.		
Body Diode Forward Voltage	V_{SD}	-	3.7	-	V	$V_{GS}=-5V, I_{SD}=60A$ $T_j=25^{\circ}C$
		-	3.2	-		$T_j=175^{\circ}C$
Body Diode Continuous Forward Current	I_S	-	-	119	A	$T_C = 25^{\circ}C$
		-	-	66	A	$T_C = 100^{\circ}C$
Body Diode Reverse Recovery Time	t_{rr}	-	23	-	ns	$V_{GS}=-5V, I_{SD}=60A,$ $V_R=800V$ $di/dt=1000A/us$
Body Diode Reverse Recovery Charge	Q_{rr}	-	168	-	nC	
Peak Reverse Recovery Current	I_{RRM}	-	13	-	A	

Typical Performance Characteristics

Fig 1: Output Characteristics $T_j=25^\circ\text{C}$

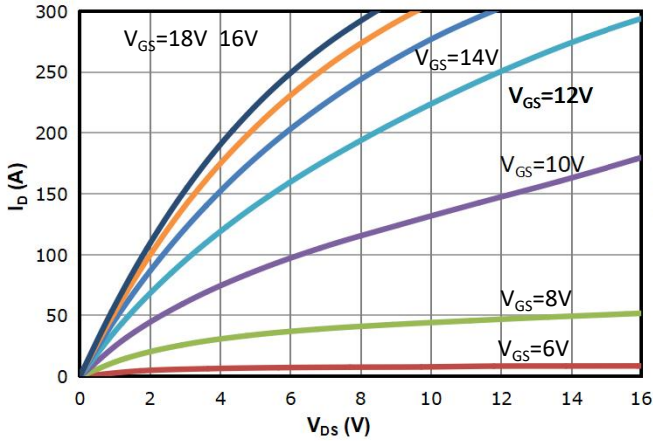


Fig 2: Output Characteristics $T_j=175^\circ\text{C}$

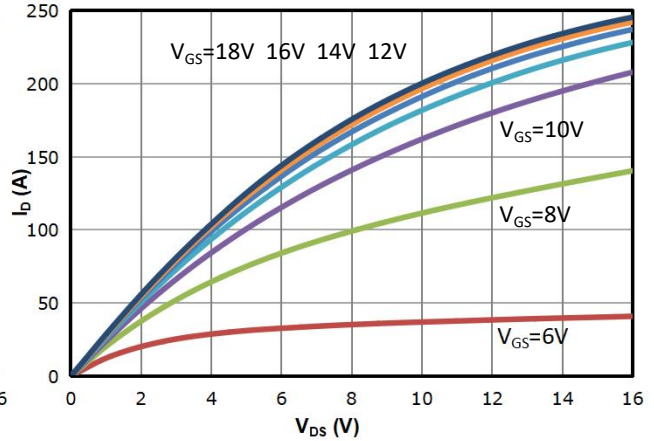


Fig 3: Transfer Characteristics

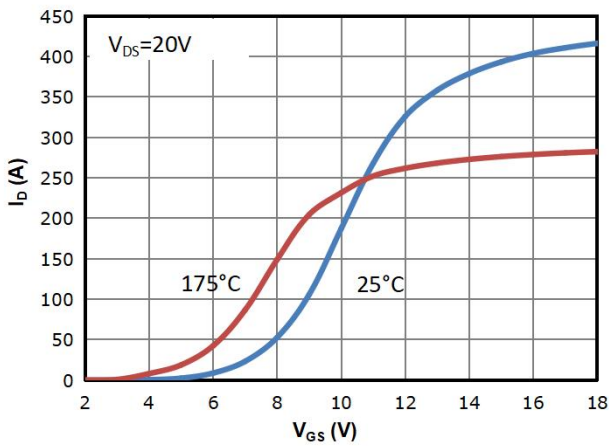


Fig 4: $R_{DS(on)}$ vs Drain Current and Gate Voltage

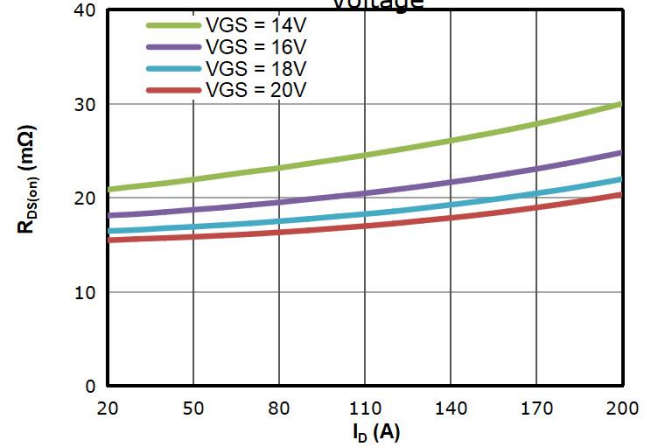


Fig 5: $R_{DS(on)}$ vs. Temperature

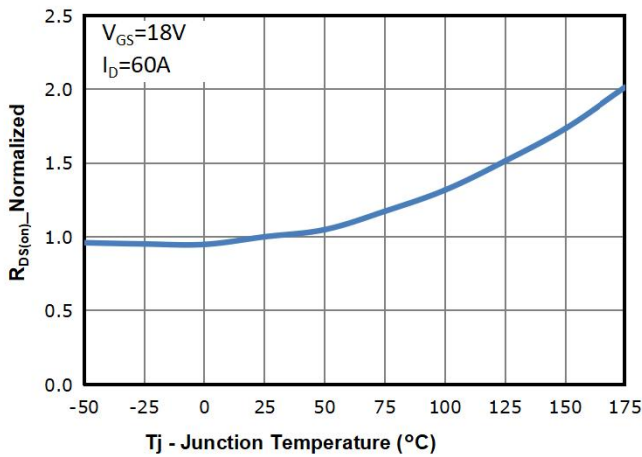


Fig 6: $V_{GS(th)}$ vs. Temperature

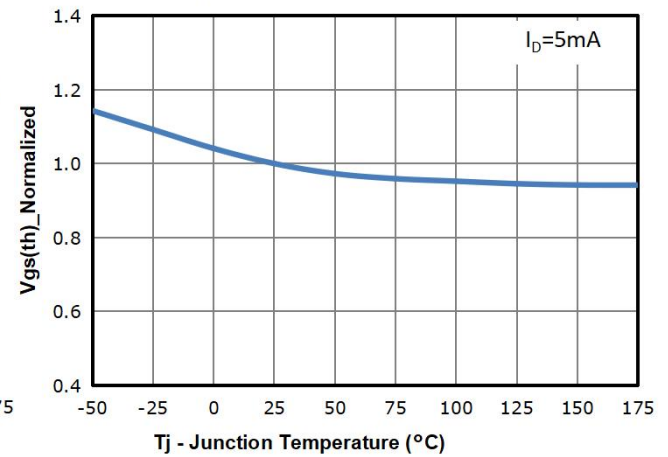


Fig 7: BVdss vs. Temperature

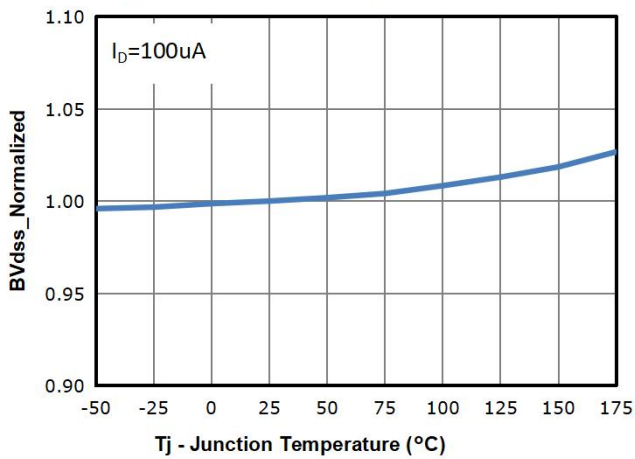


Fig 8: Capacitance Characteristics

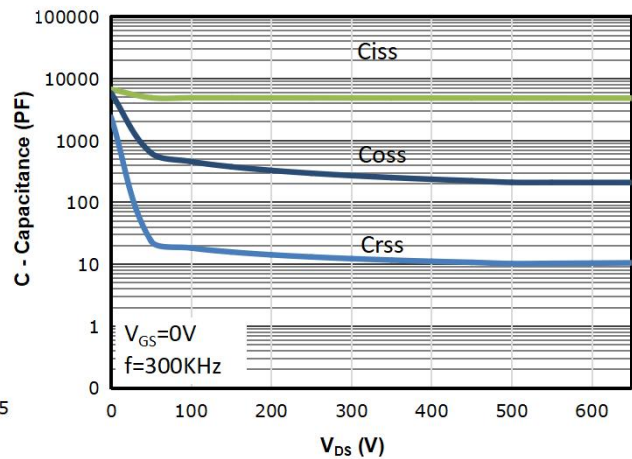


Fig 9: Gate Charge Characteristics

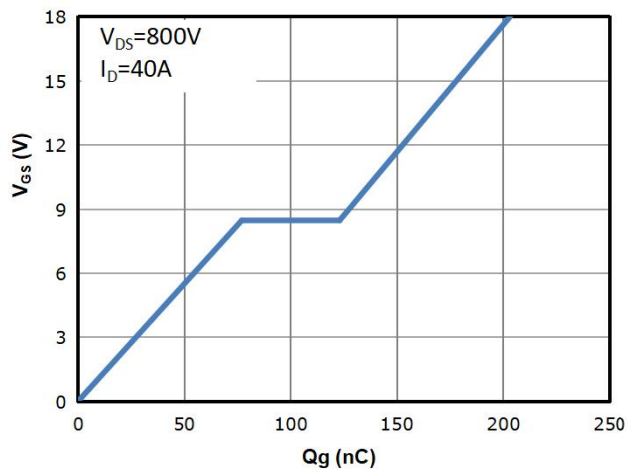


Fig 10: Body-diode Forward Characteristics

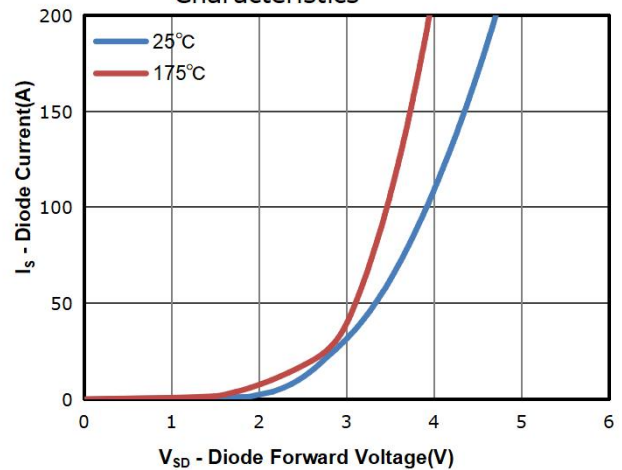


Fig 11: Power Dissipation

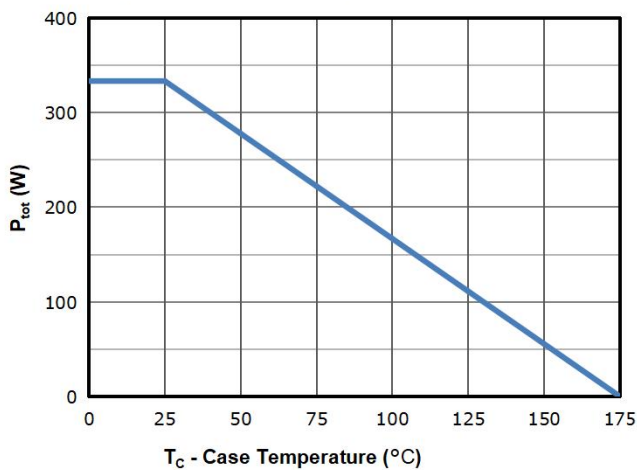


Fig 12: Drain Current Derating

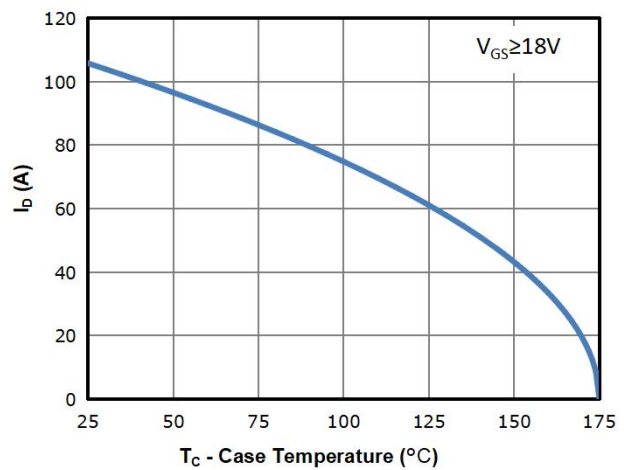


Fig 13: Safe Operating Area

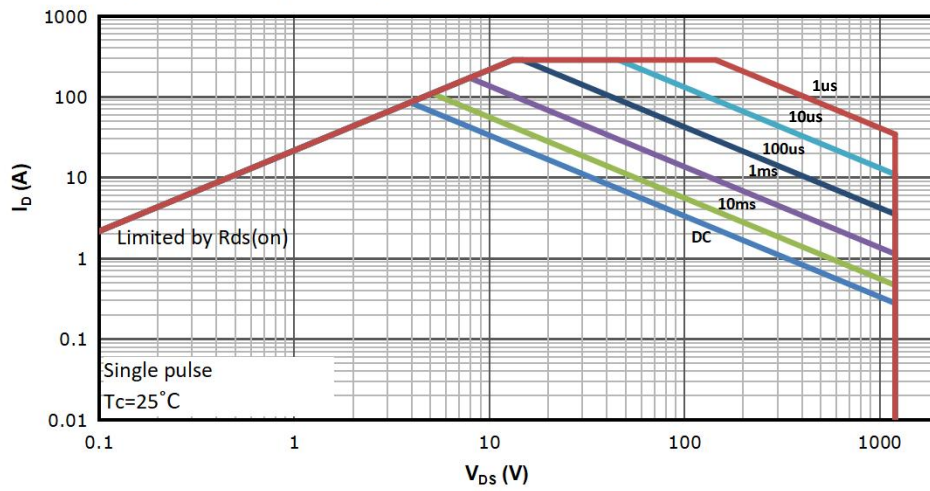
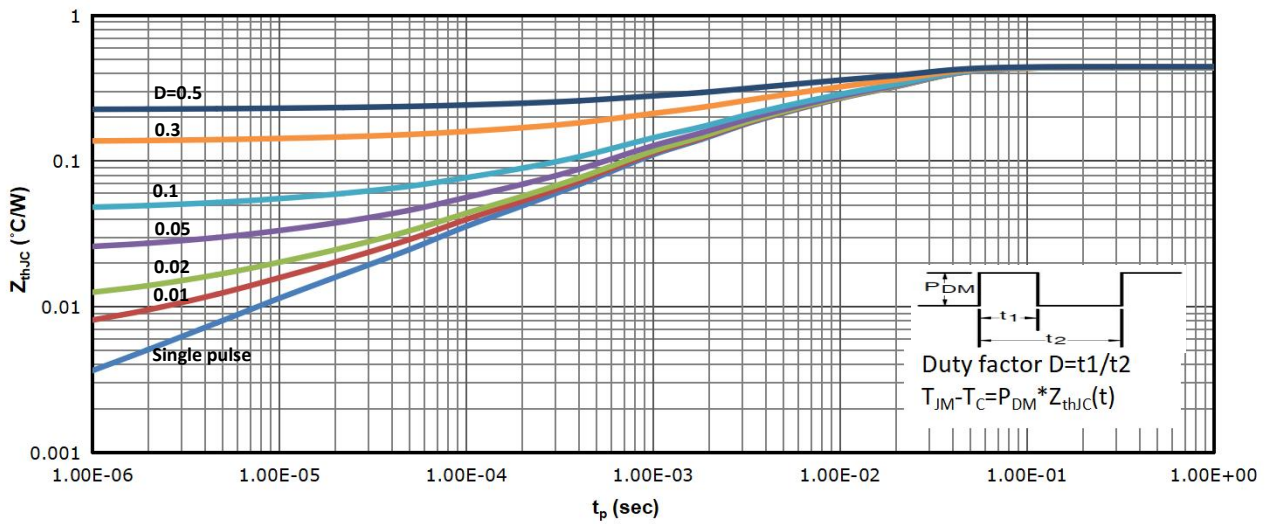
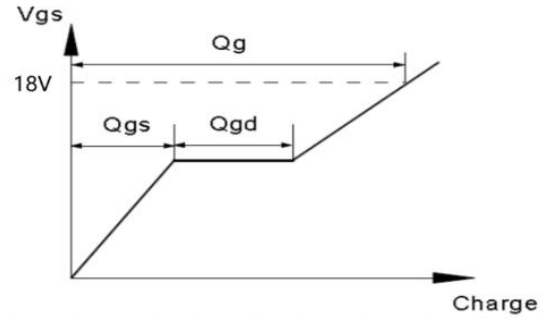
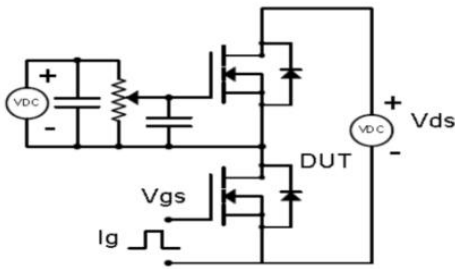


Fig 14: Max. Transient Thermal Impedance

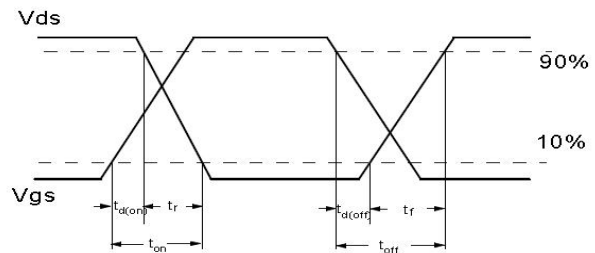
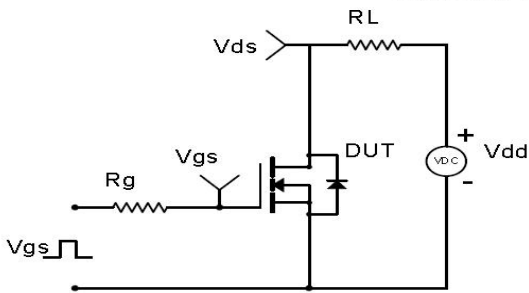


Test Circuit & Waveform

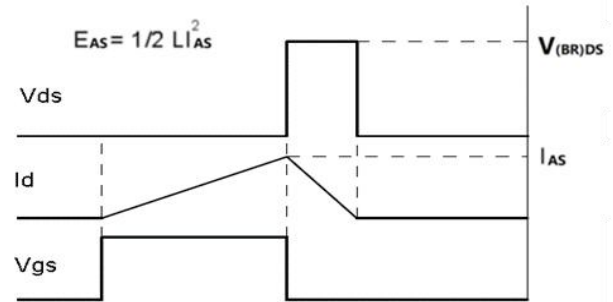
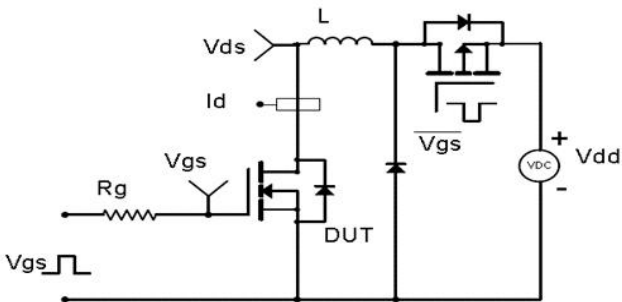
Gate Charge Test Circuit & Waveform



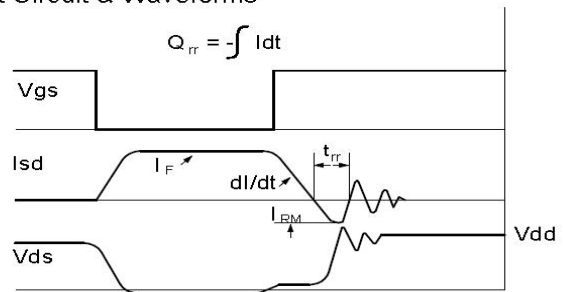
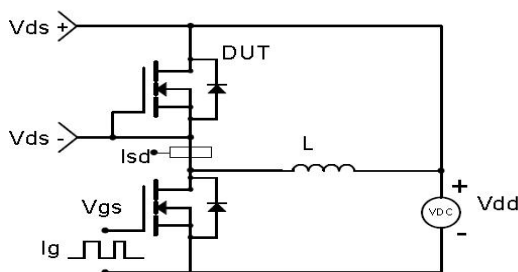
Resistive Switching Test Circuit & Waveforms



Unclamped Inductive Switching (UIS) Test Circuit & Waveforms



Diode Recovery Test Circuit & Waveforms



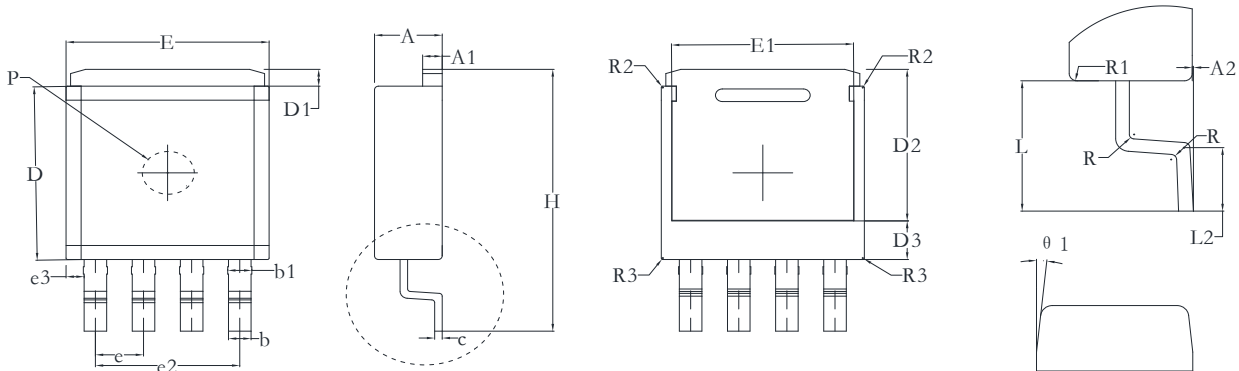
SC018N120YM-R

Silicon Carbide MOSFET 1200V, 18mΩ, 106A



重庆平伟半导体股份有限公司

Package Outline: TO-247SM



SYMBOL	MILLIMETERS		INCHES	
	MIN	MAX	MIN	MAX
A	4.35	4.65	0.171	0.183
A1	1.20	1.40	0.047	0.055
b	1.45	1.55	0.057	0.061
b1	1.50	1.70	0.059	0.067
c	0.45	0.55	0.018	0.022
D	12.28	12.48	0.483	0.491
D1	1.10	1.30	0.043	0.051
D2	10.63	10.83	0.419	0.426
E	13.40	13.60	0.528	0.535
E1	12.00	12.20	0.472	0.480
e	3.16	3.24	0.124	0.128
e2	9.45	9.75	0.372	0.384
e3	1.16	1.24	0.046	0.049
H	18.40	19.00	0.724	0.748
L	4.82	5.42	0.190	0.213
L2	1.70	2.30	0.067	0.091
R	0.35	0.65	0.014	0.026
θ1	6°	10°	6°	10°
P	2.85	3.15	0.112	0.124
D3	2.65	2.95	0.104	0.116
A2	0.10	0.20	0.004	0.008
R1	0.75	0.85	0.030	0.033
R2	0.15	0.25	0.006	0.010
R3	0.05	0.15	0.002	0.006



Disclaimer

Any and all semiconductor products have certain probability to fail or malfunction, which may result in personal injury, death or property damage. Customer are solely responsible for providing adequate safe measures when design their systems.

The product is not intended for use in applications that require extraordinary levels of quality and reliability, such as aviation/aerospace and life-support devices or systems.

Buyer is responsible for its products and applications using PingWei products, including compliance with all laws, regulations and safety requirements or standards, regardless of any support or applications information provided by PingWei.

“Typical” parameters which may be provided in PingWei data sheets and/or specifications can and do vary in different applications and actual performance may vary over time. All operating parameters, including “Typicals” must be validated for each customer application by customer’s technical experts

ALL PRODUCT, PRODUCT SPECIFICATIONS AND DATA ARE SUBJECT TO CHANGE WITHOUT NOTICE TO IMPROVE RELIABILITY, FUNCTION OR DESIGN OR OTHERWISE