

# 1N4007G

## 1.0AMP . GLASS PASSIVATED RECTIFIERS

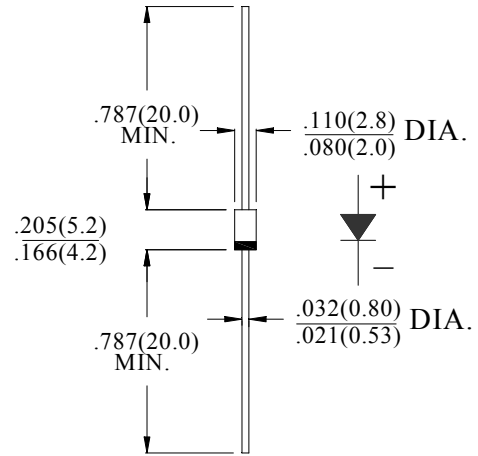
### FEATURE

- . High current capability
- . Low forward voltage drop
- . Low power loss, high efficiency
- . High surge capability
- . High temperature soldering guaranteed  
260°C /10sec/ 0.375" lead length at 5 lbs tension

### MECHANICAL DATA

- . Terminal: Plated axial leads solderable per MIL-STD 202E, method 208C
- . Case: Molded with UL-94 Class V-0 recognized Flame Retardant Epoxy
- . Polarity: color band denotes cathode
- . Mounting position: any

### DO-41



Dimensions in inches and (millimeters)

### MAXIMUM RATINGS AND ELECTRICAL CHARACTERISTICS

Ratings at 25°C ambient temperature unless otherwise specified.  
Single phase, half wave, 60Hz, resistive or inductive load.  
For capacitive load, derate current by 20%

Type Number	SYM BOL	1N4007G	units
Maximum Recurrent Peak Reverse Voltage	$V_{RRM}$	1000	V
Maximum RMS Voltage	$V_{RMS}$	700	V
Maximum DC blocking Voltage	$V_{DC}$	1000	V
Maximum Average Forward Rectified Current .375"(9.5mm) lead length	$I_{F(AV)}$	1.0	A
Peak Forward Surge Current 8.3ms single half sine-wave superimposed on rated load (JEDEC method)	$I_{FSM}$	30.0	A
Maximum Forward Voltage at 1.0A DC	$V_F$	1.0	V
Maximum DC Reverse Current @ $T_J=25^\circ\text{C}$ at rated DC blocking voltage @ $T_J=125^\circ\text{C}$	$I_R$	5.0 100.0	$\mu\text{A}$
Typical Junction Capacitance (Note 1)	$C_J$	8	pF
Typical Thermal Resistance (Note 2)	$R_{(JA)}$	75	$^\circ\text{C/W}$
	$R_{(JC)}$	25	
Storage Temperature	$T_{STG}$	-55 to +150	$^\circ\text{C}$
Operation Junction Temperature	$T_J$	-55 to +150	$^\circ\text{C}$

### Note:

1. Measured at 1.0 MHz and applied reverse voltage of 4.0Vdc
2. Thermal Resistance from Junction to Ambient at 0.375" (9.5mm) lead length, vertical P.C.Board Mounted.

**RATING AND CHARACTERISTIC CURVES (1N4007G)**

FIG.1-TYPICAL FORWARD CURRENT DERATING CURVE

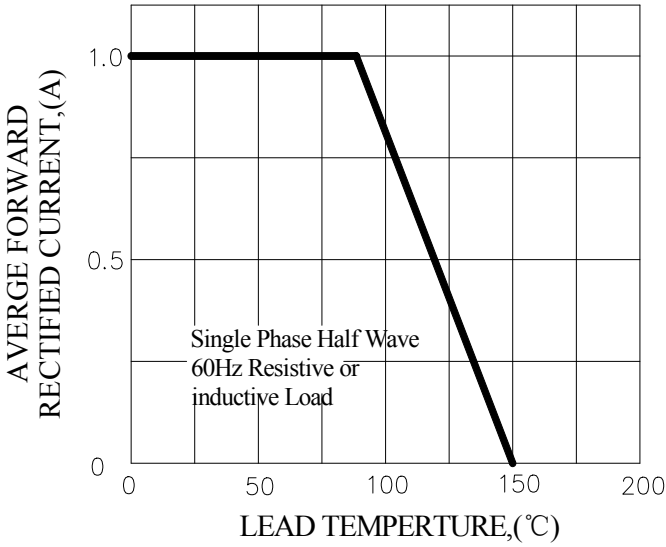


FIG.2-TYPICAL INSTANTANEOUS FORWARD CHARACTERISTICS

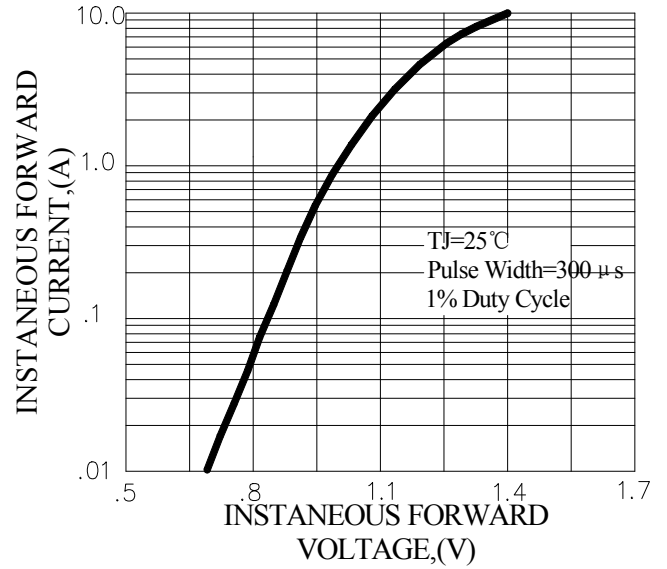


FIG.3-MAXIMUM NON-REPETITIVE FORWARD SURGE CURRENT

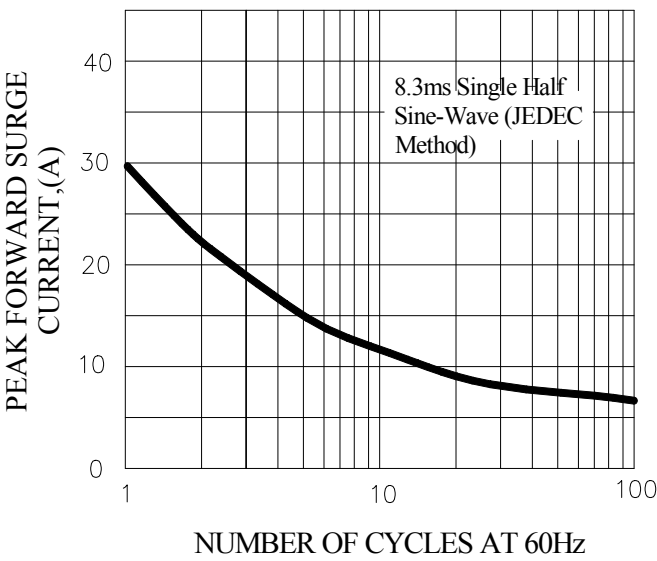
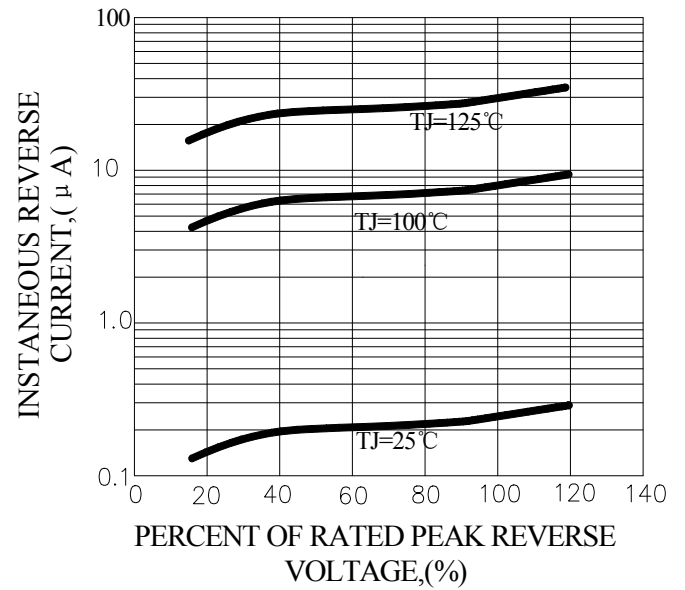
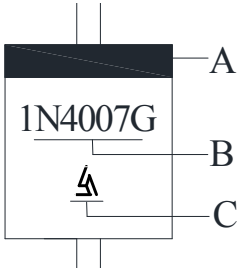


FIG.4-TYPICAL REVERSE CHARACTERISTICS



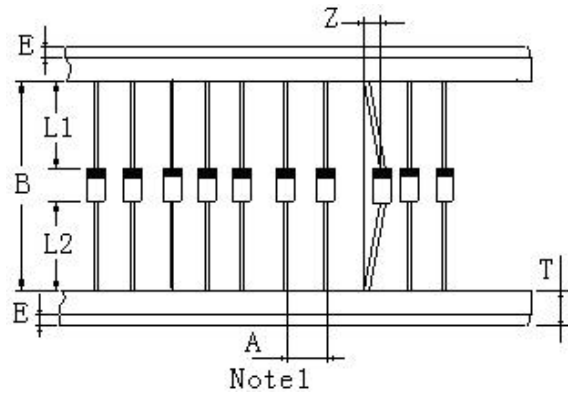
## Marking and packaging illustration

### 1、Marking



SYMBOL	Explanation
<b>A</b>	Color Band Denotes Cathode
<b>B</b>	Product Name
<b>C</b>	Trademark

### 2、Packaging



ITEM	SYMBOL	SPECIFICATIONS	
		(mm)	(inch)
Component alignment	Z	1.2max	0.048max
Tape width	T	6.0±0.4	0.236±0.016
Exposed adhesive	E	0.8max	0.032max
Body eccentricity	L1-L2	1.0max	0.040max
Component	A	5.0±0.5	0.2±0.02
Inner tap	B	52.0~53.5	2.05~2.11

NOTE:

Each component lead shall be sandwiched between tapes for a minimum of 2.5mm (0.1inch)